

## Regional Distribution Centre, Aldi Stores, Swindon

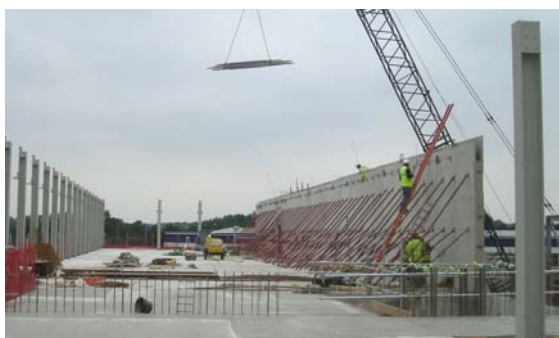
**Client:** Aldi Stores.  
**Construction Manager:** ATP (Ahammer Tritthart & Partner)  
**Value:** £7.5m.  
**Period:** May 07— December 08

The groundworks, foundations, structural concrete, infrastructure and external works package for extensions and alterations to the existing warehousing facilities to create new chiller, freezer and cold handling facilities, together with a new office block, was negotiated with Aldi/ATP and followed the successful completion of 2 similar schemes in Neston, Wirral, and Atherstone, Warks. Early involvement in the design development process allowed us to work together with ATP and identify a number of alternative construction solutions which produced cost, risk and time saving and which were included in the final design.

The new two storey office building is 3,000m<sup>2</sup> (plan area) and the warehousing facilities (incorporating freezer, chiller and cold handling areas as well as plant maintenance and battery charging unit) were extended by 14,000m<sup>2</sup> allowing the existing building to be converted to warehouse use only.

The main work involved the following;

- Establishment of temporary vehicle and pedestrian site access road and footpath including security and wheelwash to allow uninterrupted operation of the existing facility
- 11,000m<sup>3</sup> of excavation for foundations including 9,750m<sup>3</sup> in rock
- Reinforced concrete foundations, column bases, base slabs, retaining walls, internal walls & suspended slabs to office and warehouse buildings including;
  - ◇ 25,700 m<sup>2</sup> of blinding,
  - ◇ 6991m<sup>3</sup> of foundations, column bases, ground slabs, ground beams and retaining walls
  - ◇ 1,590m<sup>3</sup> of suspended slabs on 'holorib' decking & formwork
  - ◇ 1200m<sup>3</sup> internal walls & staircases
  - ◇ Precision fixing of built-in structural steel mounting connections
  - ◇ Use of 1285 tonnes bar and mesh reinforcement
- Construct 3 in-situ reinforced concrete underground surface water retention tanks, 1,400 m<sup>3</sup> storage capacity
- Install 'twin wall' pre-cast walling system with integral reinforcement for walls up to 13m high. The high quality twin 60mm thick pre-cast units are positioned and propped allowing infill concrete placement to the remainder of the wall section. (5020m<sup>2</sup> in 524 units)



## Regional Distribution Centre, Aldi Stores, Swindon (cont'd)



- Installation of foul and surface water drainage to new facilities including;
  - ◇ 670 m of 150mm—450mm diameter sewer with 28 manholes
  - ◇ 2 nr bypass interceptors and 1 grease trap
  - ◇ Includes diversion of existing drainage and maintenance of flows to allow construction of new facility
  - ◇ 1100m of 150mm perforated land drain
- Installation of 7,000 m of multiple ducting and 50 draw pits for new service supplies—Telecom, Gas, Water, Electric



- External works, roads and paving to new and existing facility includes;
  - ◇ Reconstruct existing bituminous access road, 6,000m<sup>2</sup> include break out existing tarmac construction
  - ◇ Place 3,000m<sup>3</sup> of type 1 sub base to formations
  - ◇ Block paving to car park (2,500m<sup>2</sup>)
  - ◇ Grasscrete fire path to warehouse and office facility (700m<sup>2</sup>)
  - ◇ Concrete service yards (3,000m<sup>2</sup>)
  - ◇ 1,500m<sup>2</sup> footways in tarmac and paving slabs
- On completion of the new office block and cold storage areas, various dismantling, refurbishment and new construction works were completed to the existing warehouse facility.

The success of the project has been achieved by establishing and maintaining a close working relationship with both the construction management team and the other UK and European trade contractors. In addition our commitment to health & safety management has ensured that we have had no reportable accidents on the contract.